

XHKJ-1000 Overhead Line Fault Location System

XHKJ-1000 Overhead Line Fault Location System

Introduction

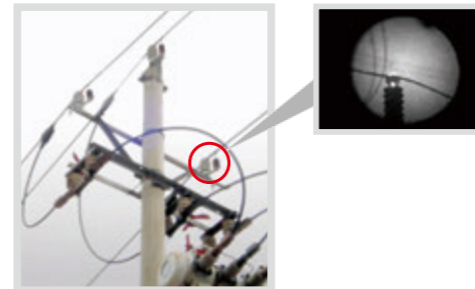
XHKJ-1000 is a portable device, which can apply to overhead line small current grounding power system. It is use to pinpoint the earth fault when line break down when single phase grounding fault happen. The kit includes transmitter, sensor and receiver and the accessories.

After the overhead line stop running, the transmitter will inject ultralow frequency HV signal to the line to reappear the fault. Detect along with the line by the sensor and it will transmit data to the receiver by wireless mode. The receiver will collect and display this detect result.



Features

- ◆ Principle: ultralow frequency signal transmission technology.
- ◆ Wide range: up to 30 km.
- ◆ Anti-interference: ultralow frequency signal to avoid capacitor influence.
- ◆ Apply to small current neutral grounding distribution power system.
- ◆ Safe transmitter by black and short-circuit function.
- ◆ Light and easy to carry.
- ◆ Large LCD display interface.



Transmitter:

,2t hmuimLuqhRasqpBt	wh5N
EMaiqhmuimLuqhmLjit q	nbbh:G
,Lq2Lqh)itxLt me	nhrC
Ja(ti	GFh IIBN3h aih Bt tipqai3h mpih u RtiqtiH Sp1vh 2a(tihzbbI
EuCt	dgb Inb dbb::
ItuBMq	nIh5B

Receiver:

GmmLipme	bvl:
fucqp mth)ia:h qM qip c:uqqti	Vtsa(hdbbh:
Ja(ti	g GGh4ieh-pqqtie
EuCt	lbg nbb dg::
ItuBMq	bv/gh5B



A x TaW xD Ua< D UaW U ij x aW U

Transmitter:

A a Ux a x	UaaaaaaaaaacMMMO
A a aaaaUa Ua Ua x UaccMImLM49aa	aaaaaaaaaaaaaaaaaaaaaaaa-2T afclM.aalIac.
:x U a YU j	'a52NafldLMicd)<
2 x ' 'a U d aa	
2x aU ' Ua x nll	

Receiver:

GmmLipme	bvl:
fucqp mth)ia:h qM qip c:uqqti	Vtsa(hdbbh:
Ja(ti	g GGh4ieh-pqqtie
EuCt	lbg nbb dg::
ItuBMq	bv/gh5B

